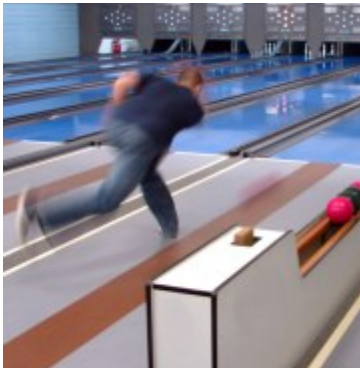


Public Address Systems



AUDIOTRAK

www.audiotrak.com

Product Catalogue
2008



AUDIOTRAK

www.audiotrak.com

Public Address Systems Product Catalogue

Whether you need a simple announcement Public Address installation or integrated with Background Music, look to the cost-effective high quality range of Public Address System products from AudioTrak. AudioTrak products that can be combined to create perfect solutions for a wide range of PA applications. AudioTrak offers a complete range of PA loudspeakers, amplifiers, microphones and other professional audio accessories for a total solution.

Products are easy to install and configure and are known to provide high performance with absolute reliability. Incorporating state-of-the-art audio technology, including options for background music, AudioTrak offers products for a total PA solution designed with your requirements in mind for your customers. People are entitled to an enjoyable environment, with the peace of mind to the clarity of sound that a public address system brings. AudioTrak helps you meet this fundamental need in the most cost-effective and user-friendly way. Products satisfy in all kinds of applications, ranging from commercial businesses, factories, places of worship, schools, government institutions to hotels, recreation centers, etc. The products are easy to understand and install and a pleasure to operate. The combination of technology, reliable engineering and quality materials ensures best-in-class equipment and complete satisfaction for you and your customers.

Enjoy the high performance AudioTrak products!

In this catalogue:

- Mixing Amplifiers
- Power Amplifiers
- Microphones
- Ceiling Speakers
- In-wall Speakers
- Column Speakers
- Wall Mount Speakers
- Box Speakers
- Horn Speakers
- Volume Controls





AUDIOTRAK

www.audiotrak.com

Mixing Amplifiers

The AudioTrak mixing amplifiers are best-in-class, high performance, versatile four microphone inputs mono mixing amplifiers, capable of fulfilling a wide variety of public address requirements for surprisingly low cost. AudioTrak range of public address mixing amplifiers have power ratings from 60W to 350W. Priority muting is achieved via Mic1. Individual gain controls are provided for MIC and AUX inputs, bass and treble controls and provided for overall tone control. 4 ohms, 70V and 100 V speaker outputs are provided. Extensive protection from short-circuit, clipping and over-temperature. The Microphone inputs have phantom power with independent switches.

Model nos.

AT 60MB

AT 120MB

AT 240MB

AT 350MB



- Four MIC inputs(XLR Blance MIC Input+Phantom Power)
- OneAUX input
- MIC1 priority input
- Individual gain controls for MIC and AUX
- Master volume control
- Bass and treble tone controls
- 4 ohms, 70V and 100V speaker output
- 12V DC interface
- Mute function

	AT 60MB	AT 120MB	AT 240MB	AT 350MB
Rated Power Output	60W	120W	240 W	350 W
Speaker Output	4 ohms, 70V, 100V			
Input	MIC 1,2,3,4: 2mV/600 ohms, unbalanced /balanced;AUX 1: 150mV/15k ohms, unbalanced			
Output	600 ohms, 1V			
Frequency Response	50Hz - 15kHz			
S/N Ratio	MIC 1,2,3,4: 66dB;AUX 1: 80 dB			
THD	Less than 1% at 1kHz, 1/3 rated power			
Crosstalk	MIC: 80dB;AUX 85dB			
Muting function	MIC 1 overrides other input signals with 0-30 dB attenuation			
Controls	Individual gain controls, power switch;Bass: *10dB at 100Hz,Treble: ±10dB at 10kHz.			
Indicators	Power LED, LED level meter, protect and temp			
Protection	AC fuse, short-circuit and high temperature			
Power Requirements	110-120V AC or 230-240V AC 50/60Hz;12V/24V DC.			
Power Consumption	100W	200W	400W	500W
Weight	14 Kg	15 Kg	17 Kg	18 Kg
Dimensions (w x d x h)	484×435×88mm	484×435×88mm	484×435×132mm	484×435×132mm
Finishing Panel	Panel: aluminum plate, black ;Case: steel plate, black.			



AUDIOTRAK

www.audiotrak.com

Model nos.

AT 1S240

AT 6350

AT 6500

Power Amplifiers

AudioTrak range of power amplifiers are high performance mono amplifiers capable of fulfilling a wide variety of public address requirements for surprisingly low cost. They use the compact 19", 2U and 3U high housing for tabletop use and rack mounting. These are heavy-duty public address power amplifiers and deliver clean audio power from 240W to 500W RMS with less than 0.5% distortion. The amplifiers have 4~16 Ohm, 70V and 100V transformer-isolated speaker outputs. The amplifiers are rugged and overbuilt to provide years of reliable service they are equipped with toroidal transformers, extensive heat-sinking, forced fan cooling and protection circuits against short-circuit, clipping and over-temperature.



- 100V, 70V constant voltage output and 4-16 amp. Constant resistance output (balanced and no grounding)
- Well performance with wide-frequency, low noise, hi-fidelity and powerful output
- Intelligent limiter can cut down excess band
- Perfect and reliable protection of overload, short circuit, DC output transmission
- Excellent device of radiator fanner that ensure long-playing working effectively
- 240-500 Watts RMS
- LED status indicators
- Short-circuit, clipping and high-temp protection.
- XLR / phone jack IN and LINK connectors
- Volume control
- Low impedance and constant voltage speaker outputs
- 2U & 3U Rack-mount chassis

	AT 1S240	AT 6350	AT 6500
Rated Power Output	240 W	350 W	500 W
Speaker Output	4~16ohms, 70V, 100V		
Input	775mV/0db; 100V, 330Kohm		
Frequency Response	50Hz-18kHz		
S/N Ratio	Better than 105 dB		
THD	Less than 1% @ 1kHz, 1/3 rated power		
Controls	Power switch, volume control		
Indicators	Power, clipping, signal, protect & high temperature		
Protection	AC fuse, short-circuit, clipping & high temperature		
Power Requirement	110-120V AC or 230-240V AC 50/60Hz		
Power Consumption	440 W	500 W	720 W
Weight	18.8 kg	23 kg	25 kg
Dimensions	484×383×132mm	484×450×132mm	484×450×132mm
Finish	Aluminum plate, black ;Case: steel plate, black		

Microphones

Wired Microphones

The AudioTrak range of microphones are designed for high speech intelligibility. The microphones have excellent directivity, so reducing acoustic feedback. Their rugged enclosure is both stylish and easy to use in a wide range of public and sound reinforcement applications such as in temples, churches, mosques, theatres, congress centers, sports halls, etc. Microphones requiring phantom power can avail on microphone inputs on AudioTrak public address amplifiers.



AUDIOTRAK

www.audiotrak.com



Specifications

- Frequency response: 50Hz to 12kHz
- Impedance: 600Ω
- Sensitivity: -63dB
- Dimensions: 150 x 400mm
- Net weight: 1.1kg

Features

- All-in-one design
- Built-in amplifier and speaker
- Flexible gooseneck microphone and light
- Luxurious speech platform used to be giving speech, teaching and meeting
- Equipped with 3 built-in woofers and one alt speaker

Model	Description
AT 521	Dynamic Microphone with base and built-in Chime
AT RXE	Dynamic Handheld Microphone
AT 721A	Paging Microphone
AT 6236	Ergonomically designed Lectern consisting of PA podium, 60W Amplifier and Speaker, a flexible gooseneck microphone and light

Wireless Microphones

AudioTrak offers a VHF Wireless Microphone system with two handheld wireless microphones.

Model no.
AT 521F



Specifications

- Frequency range: 210 to 260MHz
- Stability: $\pm 0.002\%$
- Sensitivity: $-110\text{dBm}/\mu\text{V}$ (S/N: 12dB)
- S/N: $> 70\text{dB}$
- Audio response: 50Hz to 15kHz, $\pm 3\text{dB}$
- THD: $< 1\%$
- Receive range: $> 80\text{m}$
- Output impedance: 600 Ohms
- Power supply: 220V AC/50Hz
- Transmitter (handheld mic)
- Frequency range: 210 to 260MHz
- Stability: $\pm 0.002\%$
- Mode: FM
- Output: $< 30\text{mA}$
- Power supply: 9V DC





AUDIOTRAK

www.audiotrak.com

Ceiling Speakers

The AudioTrak ceiling speakers are exceptional quality, economic flush-mounting ceiling loudspeakers for general purpose applications. These are full-range loudspeakers for speech and music reproduction in shops, department stores, schools, offices, sports halls, hotels, restaurants, etc. They have dual-cone loudspeakers with wattage of 4W, 6W and 9W with options of metallic and plastic grille. A 100V matching transformer is mounted on the back. The appearance and neutral white RAL colour suits in virtually all interiors.

Model nos.

AT 104
AT 105
AT 105A
AT 105D



	AT 104	AT 105	AT 105A	AT 105D
Grille		Metallic		Plastic
Rated Power	4W	6W	9W	6W
Speaker	4" Cone type	5" Cone type	5" x 2" Cone type tweeter	5" Cone type
Line Volt.	70V/100V			
Sensitivity (1m, 1w)	96 dB		98 dB	96 dB
Freq. Resp.	70Hz-16000Hz		70Hz-18000Hz	70Hz-16000Hz
Hole Size	165mm	170mm	175mm	165mm
Net weight	0.77 kg	0.81 kg		1.1kg
Mount type	Spring Clip			

In-wall Speakers

The AudioTrak In-Wall loudspeakers are ideal for built-in sound installations in shops, department stores, schools, offices, hotels and restaurants. They are manufactured and finished guaranteeing high-quality and compatibility throughout the range.



AUDIOTRAK

www.audiotrak.com

Model nos.
AT 551
AT 553



	AT 531	AT 553
Material	Plastic enclosure+Iron grille	
Rated Power	4W	6W
Line Volt	70V/100V	
Sensitivity	96dB	
Freq. Resp.	70Hz - 16,000Hz	
Hole Size	150mm x 150mm	125mm x 195mm
Dim	5" coaxial speaker	4" woofer and 2-inch tweeter
Net Weight	0.8Kg	1.2Kg
Mount Type	Spring Clip	

Column Speakers

The AudioTrak column loudspeakers are suitable for areas with different acoustic conditions, and sound directivity is important. Typical examples include temples, churches and mosques, conference centers, etc. The column Loudspeakers provide excellent sound quality, high speech intelligibility and better music reproduction with improved frequency response in the higher-frequency region. The unit has a 100V matching transformer with 70V/100V speaker output.



Model nos.
AT 301
AT 301A
AT 302A
AT 303A

	AT 301	AT 301A	AT 302A	AT 303A
Material	Wooden			
Rated Power	10W	20W	30W	40W
Line Voltage	70V/100V			
Sensitivity	96dB			
Freq. Resp.	130Hz - 15000Hz			
Dimensions	135x120x325mm, 4" woofer and 2" tweeter	160x120x365mm, 2 x 5" woofer	160x120x490mm, 3 x 5" woofer	160x120x620mm, 4 x 5" woofer
Net Weight	2.4kg	3.6Kg	4.8Kg	6Kg



AUDIOTRAK

www.audiotrak.com

Column Speakers

Model nos.

AT 702A

AT 703A

AT 704A

	AT 702A	AT 703A	AT 704A
Material	Aluminium alloy		
Rated Power	20W	30W	40W
Line Voltage	70V/100V		
Sensitivity	96dB		
Frequency Response	150Hz-15000kHz		
Dimensions	105x75x410mm; 4 x 2" full frequency	105x75x550mm; 6 x 2" full frequency	105x75x690mm; 8 x 2" full frequency
Net Weight	2.1kg	5.8kg	7.2kg
Mount type	Bracket Wall		



Wall Mount Speakers

AudioTrak Wall-Mount loudspeakers offer a combination of quality, performance and innovation in public address. They meet virtually all sound reinforcement system requirements. These loudspeakers deliver professional performance from a compact robust enclosure. They have been developed to meet the increasing demands for high-quality speech and background music reproduction in indoor applications. The loudspeaker filter extends the frequency range at both low and high frequencies to provide excellent music reproduction in shops, bars, food-joints, malls, boutiques, etc. The range offers 10W, 20W, 30W and 40W models.

Model nos.

AT 774

AT 776

	AT 774	AT 776
Material	Plastic	
Rated input power	10W	20W
Speaker unit	4" coaxial poly pp + 2" tweeter	6" coaxial poly pp + 2" tweeter
Frequency response	120Hz to 16 kHz	130Hz to 16 kHz
Sensitivity	96dB	98dB
Dimensions	165 x 158 x 220mm	219 x 300 x 297mm
Weight	2.2kg	3.5kg





AUDIOTRAK

www.audiotrak.com

Model nos.
AT 775H
AT 776H



	AT 775H	AT 776H
Material	Plastic	
Rated Input Power	30W	40W
Power Taps	3.75, 7.5, 15 or 30W and 8Ω	5, 10, 20 or 40W and 8Ω
Frequency Response	30Hz to 20kHz	30Hz to 20kHz
Sensitivity	98dB	
Line Input	100 and 70V, 8Ω	
Operating Temperature	-10 to +50 degrees Celsius	
Speaker Unit	5.5 + 2-inch	6.5 + 2-inch
Dimensions	220 x 178 x 155mm	310 x 213 x 195mm
Weight	3.1kg	3.7kg
Connection	Red/Black screw terminal	Red/Black screw terminal

Box Speakers

AudioTrak range offers 6W Box Speakers suitable for speech and background music reproduction in indoor applications.

Model no.
AT 601



	AT 601
Material	Plastic
Rated Power	6W
Line Voltage	70/100V
Frequency Response	120Hz - 16kHz
Sensitivity	96db
Dimensions	185 x 107 x 275 mm



AUDIOTRAK

www.audiotrak.com

Horn Speakers

AudioTrak high-efficiency horn loudspeakers provide excellent speech reproduction and sound distribution for a wide scope of outdoor applications. They are ideal for sports grounds, parks, Car-parking, exhibitions, factories, swimming pools, etc. The range offers 15W and 30W models. Both the models are for direct connection to 100V line output. These are made with strong plastic for optimum strength and low weight.

Model nos.
AT 720A
AT 720B

	AT 720B	AT 720A
Material	Plastic	Plastic
Rated Power	30W	15W
Line Voltage	70V/100V	
Sensitivity	113dB±3dB	103dB+/-3dB
Freq. Resp.	250Hz - 8kHz	250Hz - 8kHz
Carton Size	284x288x205mm	222x233x162mm
Net Weight	2.1Kg	1.4Kg



Volume Controls

AudioTrak provides a full range of volume controls in order to provide a complete PA solution. The design and colour are unobtrusive in any interior. Ease of installation, operation and reliability has been optimized in the design. Public address systems are often used for both announcements and background music distribution. In order to adjust the level locally, volume controls can be used. The total load of the loudspeakers connected to the volume controls may not exceed its rated power. Volume Controls of 6W, 30W, 60W and 120W are available.

Model nos.
AT 6
AT 13
AT 16
AT 112



	AT 6	AT 13	AT 16	AT 112
Rated Power	6W	30W	60W	120W
Type	Resist		Trans	
Steps	5			
Wall Plate	Plastic			
Dimensions	82.5x82.5x45mm			





Make the right choice.

Whether you need a simple announcement Public Address installation or integrated with Background Music, look to the cost-effective high quality range of Public Address System products from AudioTrak. Our products are easy to install and configure and are known to provide high performance with absolute reliability. The combination of technology, reliable engineering and quality materials ensures best-in-class equipment and complete satisfaction for you and your customers.

Enjoy the high performance AudioTrak products!





AUDIOTRAK

www.audiotrak.com